

RBAFC Competition Rules 2024

Inshore

Revised Jan 2024



All members/visitors taking part in any club event are expected to conduct themselves in an honest, respectful manner and promote the objectives of the club.

Safety Notice: The vessel of a competitor fishing in a club boating event must be fitted with an operational 27 Meg and/or VHF marine radio. The operator of any vessel must also comply with minimum safety requirements under the Transport Operations (Marine Safety) Act 1994 regulations. Minimum of 2 competitors required for event to take place.

1. Registering to compete:

- 1.1. All members competing must register no later than 7:30pm the Thursday prior to any club fishing event. Registration is made using the RBAFC app or Webpage (www.rbafc.org/tripregistration).
- 1.2. If the app or webpage is down or unavailable, registration can be made by SMS or phone call to the club "competition captain". Matt Melgaard
- 1.3. When an offshore competition and an inshore competition are scheduled for the same weekend, then the competitor must nominate the category they intend to fish at the time of registration. Competitors are not permitted to fish more than one category in each club event.

2. Weigh Out (Log on, log off) procedure:

- 2.1. All members competing can fish any period of time during the competition window as per calendar. Competitions will run from 5pm Friday until 12pm Sunday.
- 2.2. Once on the water competitors must log on using the RBAFC app or web page (www.rbafc.org/triplog). If the app and web page is down or unavailable then the competitor must notify the inshore captain by radio (27 Meg/channel 94, VHF/channel 71), phone or SMS advising details including POB, location of departure and ETR.
- 2.3. On returning to the ramp competitors must again log off using the RBAFC app, Webpage (www.rbafc.org/triplog) or contact the Inshore captain.
- 2.4. If contact cannot be made with the offshore captain by radio or phone call, then a text message must be sent to the captain and where possible contact should also be made with any other RBAFC member on the water and request information be relayed onto Captain / Secretary.
- 2.5. All members must log on and off via the Club App or Webpage during a competition to be eligible to weigh fish in for that event.

3. Weigh In procedure:

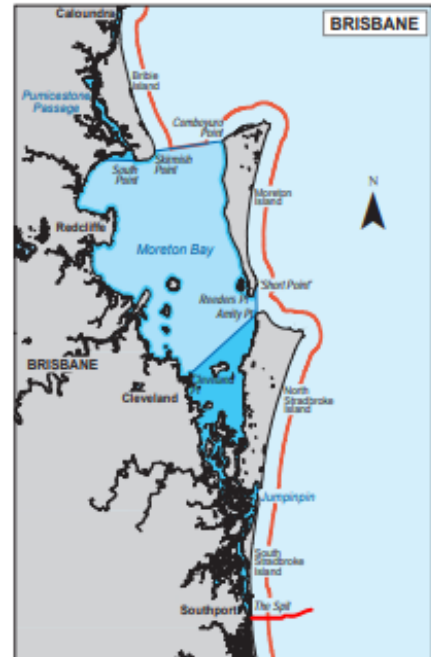
- 3.1. All anglers must have their catch at the weigh in by the designated time to be eligible for catch/score to be recorded. A competitor's catch can be weighed earlier if;
 - The weigh master agrees.
 - The competition captain and a second designated person must be present and witness.
- 3.2. If a competitor is unable to attend the weigh in, they may elect another person to weigh in their catch *provided* the competition captain or competition secretary is notified at the time of registration and a reasonable explanation is provided (feeling tired is not a valid reason).
- 3.3. Registered competitors who do not weigh in must declare "NO FISH" to be recorded as having participated in the event.
- 3.4. All fish presented for weigh in must be weighed whole and in good condition. Fish mutilated or disfigured in any way (including fish close to legal size with broken necks) will not be accepted.
- 3.5. Anglers will be asked to present their catch in the following order:

- Juniors
- Ladies
- Men

3.6. Fish will be placed in the provided basket prior to approaching the scales. A short period will then be provided for other competitors to inspect the fish presented.

4. Inshore Fishing Boundaries

- Northern limit: Comboyuro Point across to Skirmish Point and up the Pumicestone Passage to the Bribie Island Bridge.
- Southern Limit: Inside of the entrance to the Southport Seaway Bar.
- Eastern Limit: Swan Bay to the North-western tip of South Stradbroke Island. Inside South Passage Bar (Amity Point to Reeder's Point).



5. Penalties (Strictly Enforced)

The competition conditions and rules must be adhered to during competition events. If these rules are found to have been breached the following will apply:

- 5.1. A 25 point penalty per fish will be imposed on any angler who presents to the weighmaster any fish which are undersized. The penalty points will be deducted from the angler's accrued completion points total.
- 5.2. Should 4 or more undersized fish be presented, the total day's catch will be disqualified from the event and 100 points deducted from the angler's competition points.
- 5.3. All fish are deemed presented to the weighmaster when brought to the weigh in area.
- 5.4. The weigh master will determine and declare any under size fish presented to them.
- 5.5. Any disputes arising at the weigh in will be adjudicated by the competition secretary or captain. Their decision will be final in all matters.

- 5.6. Any competitor found to be discarding/dumping or failing to care for their catch in a manner that would render the catch inedible will be disqualified from the trip. Their total day's catch will be disqualified from the event and 100 points deducted from the angler's competition points. Any prizes awarded for the trip prior to the offence must be returned to the competition captain. Any reports of fish mishandling/dumping will be adjudicated by the competition secretary or captain. Their decision will be final in all matters. Any dispute must be raised with the competition captain within 24 hours of the weigh in.
- 5.7. Any club member giving or receiving fish from another member or visitor for his/her own personal gain at the weigh in, shall be disqualified from the club for life.
- 5.8. All members must log on and off during a competition to be eligible to weigh fish in for that event.

6. Visitors/Guests fishing during club events:

- 6.1. Any visitors or guests fishing during an event must declare their catch at the time of weigh in and are expected to follow the same rules as club members.
- 6.2. Any visitor taking part in 3 or more club events is expected to lodge an application for membership with the club.

7. Alterations to club events by captain:

- 7.1. The captain or his delegate for an event may designate new fishing boundaries or cancel an event if in their opinion changing weather conditions pose a threat to competitors' safety.
- 7.2. The decision will be made as early as practical and all competitors will be notified via communication means that are available to the captain (APP, SMS, Phone call). The captains' decision in these matters is final and no appeals shall be entered into.

8. Competition Rules

Club competitions shall be subject to the following general regulations:

- 8.1. All fish must be weighed in whole.
- 8.2. If the angler wishes to gill and gut their catch, the fish will be allocated 10% of their gross weight.
- 8.3. All members must log on and off during a competition to be eligible to weigh fish in for that event.
- 8.4. Crabs shall not be weighed in.
- 8.5. Competitors can use 3 rods or hand lines in any competition with not more than two hooks on each line. A flight is to be considered as 1 hook.
- 8.6. Any fish weighed in by a competitor must have been caught and reeled in by the competitor.
- 8.7. Fish shall be washed free of sand etc before weighing in and officials have the power to order fish be cleaned of sand and other foreign matter.
- 8.8. No Bill fish, Marlin or protected species are to be weighed in.

- 8.9. Any member or visitor attending a trip and who, in the opinion of a quorum, is not in possession of his/her faculties will not be permitted to fish or participate at that outing. He/she shall not be recorded in the books of the Club as having attended that outing

9. Open, ladies and juniors' events

- 9.1. Three Inshore competition categories will be fished as follows.
- Combined open competition.
 - Ladies' competition
 - Junior competition (juniors must be under 16 yrs of age as of the sign on day)

10. Trophies and awards:

- 10.1. A competitor's 10 best trip scores will be used to calculate the winner and runner up of the inshore categories.
- 10.2. Trophies will only be awarded to financial RBAFC members that meet the minimum 5-point system qualifications.
- 10.3. A visitor's recorded catch will be eligible for a trophy if they later become a financial member and meet the same minimum 5-point system qualifications.

11. Rookie Trophy:

- 11.1. Eligible rookies will score points towards Rookie of the Year. To qualify as a rookie the competitor must:
- 11.2. Be in their first 3 years at the club.
- 11.3. Not have won the rookie category previously.
- 11.4. Not have exceeded 500 points in one season previously.

12. Club Champion Trophy

- 12.1. To qualify for the Club Champion Trophy the competitors must compete in at least two competition categories from the following: Inshore, Offshore, Beach.
- 12.2. The Club Champion Trophy will be awarded to the competitor with the most points accrued from the following categories: : Inshore, Offshore, Beach, Artificial Bait Day.

13. Minimum Qualification for Trophies (5 Point System)

- 13.1. Ladies and Juniors have no minimum qualification criteria. Senior men must accrue a minimum of 5 points to qualify for any trophy. Points may be obtained as follows:
- Inshore Event (including artificial Bait event) (1) point per event.
 - Offshore Events (1) point per event
 - Beach Events (1) point per event
 - Raffle Selling (1) point per each raffle attended.
 - Boat Skipper on Ladies / Junior Events (1) point per event
 - Club Committee Member (1) point per year

14. **Weight and measures – Inshore, Artificial and Beach (Jan 2024):**

SPECIES	BAG LIMIT	MINIMUM SIZE	BONUS WEIGHT
Bream	8	28cm	.75kg
Tarwhine	8	28cm	.75kg
Flathead	4	Min 40cm - Max 75cm	1.5kg
Jew	2	75cm	5kg
Mangrove Jack	2	35cm	2kg
Morwong	4	30cm	1.5kg
Parrot	4	30cm	1.5kg
Snapper	4	36cm – no more than 1 over 70cm	1.5kg
Grass Emperor	5	30cm	.9kg
Spangled Emperor	4	45cm	1.5kg
Tailor	8	35cm	1kg
Whiting	8	27cm	.4kg
Javelin	4	30cm	1kg
Dart	8	32cm	.5kg
Pelagic	5	As per QLD fishing regs	5kg

Notes:

- All other species must be a minimum of 25cm (or longer as per fisheries regulations) and be scale bearing to be eligible for weight points.
- There will be a bag limit of 5 fish for all other species and no bag points will apply.
- Fish such as gar, pike, scad, and all bait fish including mullet are excluded from weigh ins.
- Only 1 cod will be eligible for weight points per trip.
- Pelagic includes all types of Mackerel and Tuna

15. **Points System:**

- 15.1. One (1) point is awarded per 100gms of fish.
- 15.2. Ten (10) points are awarded per species.
- 15.3. One (1) point is awarded per fish.
- 15.4. Bag limits will attract a bonus of 20 points per species listed above.
- 15.5. Maximum points for any one fish are 150 points.
- 15.6. Maximum points for any one species are 250 points.
- 15.7. Heaviest of the designated event species will be awarded an extra 75 bonus points for main species or 25 for backup species..

16. **Heaviest Fish Species – Inshore:**

- 16.1. A trophy will be awarded at the end of year for the heaviest of the following species.

Bream, Snapper, Morwong, Flathead, Mangrove Jack, Jew Fish, Javelin, Parrot, Pelagic, Sweetlip, Tailor, Whiting.

- 16.2. These can be caught on any club inshore, artificial bait day or beach trip.
- 16.3. The trophy for heaviest sweetlip(Emperor) will be limited to grass sweetlip(Emperor).

17. Designated species:

- 17.1. On inshore trips the designated species will be predetermined by the inshore captain with a backup species also provided.
- 17.2. The winner will attract an extra 50 bonus points. In the event that there is more than one fish of the same weight, the competitor that weighs in first will be the winner.

18. Handicaps:

- 18.1. The trip winner will be handicapped 20 points per trip win which will accrue to the end of the fishing year but will **not** affect the total points for club trophies.
- 18.2. Ladies and Juniors will attract a 10 point handicap under the same circumstances.

19. Points Tie Protocol

- 19.1. Should a point's tie eventuate at the end of a weigh in, the winner will be the competitor with the least number of fish caught.
- 19.2. This will acknowledge those members who caught quality fish. If they both have the same number of fish it will be awarded to the competitor that weighed in first.

20. New member point's incentive (Established 2019):

- 20.1. A new RBAFC member in the first year of their membership (must not have been a member of the club previously) will be classed as a NEW MEMBER.
- 20.2. Existing RBAFC members can earn 20 bonus points for taking a NEW MEMBER fishing. For an existing member to qualify for the 20 points the following criteria must be met:
 - They take a new member/s fishing with them on any club competition trip.
 - The NEW MEMBER must catch an eligible fish in accordance with the RBAFC rules. That fish must be weighed in and recorded.
- 20.3. An existing member can only earn the 20 points once per new member. This is to encourage existing members to take new members and welcome them into the club.

21. Junior member participation incentive (Established 2019):

- 21.1. Each junior angler that fishes in a club event and weighs in at least one fish (in accordance with the RBAFC rules) will receive a 'lucky dip' prize.
- 21.2. The junior angler with the most points overall for that trip will receive a second 'lucky dip' prize.

22. Late membership renewal disqualification (Established 2019):

- 22.1. Any person having been a financial member the previous year and has not renewed their membership for the current year, will not be eligible to weigh fish in for a club competition until such time as they pay their annual membership for the year.
- 22.2. The cut-off date for membership renewal is the last day of February.